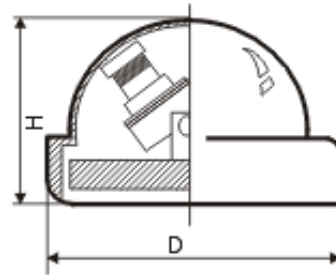


Dome Camera



Unit: mm $\Phi 120(D) \times 73(H)$



Products

Model	HH-2133
Image Pick-up Device	1/3" SONY COLOR CCD
Horizontal Resolution	420 TV Lines
Number of Pixels	NTSC:510(H) \times 492(V); PAL:500(H) \times 582(V)
Scanning System	NTSC:525 Lines,60 Field/sec, PAL:625 Lines 50 Field/sec
Sync System	Internal Synchronization
Gamma Characterlstic	0.45
S/N Ratio	≥ 48 dB(AGC Off)
Electronic Shutter Time	On: NTSC 1/60~1/100,000Sec,PAL 1/50~1/100,000Sec; Off: NTSC 1/60 Sec, PAL 1/50 Sec
Usable Illumination	0.8 Lux(F:2.0)
Lens	Board Lens 3.6mm/F2.0(optional)
Video Output	1.0Vp-p 75 ohm
Gain Control(AGC)	Auto
Cable	BNC JACK
Operation Temperature	-10 $^{\circ}$ C ~ +50 $^{\circ}$ C RH95% Max
Storage Temperature	-20 $^{\circ}$ C ~ +60 $^{\circ}$ C RH95% Max
Power Supply	DC 12V \pm 10% 400mA
Dimension	100(D) x 70(H)mm
Weight	250g